

### General features

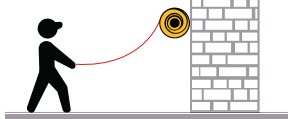
- Painted aluminum and steel case.
- Side fastening aluminum bracket.
- Steel springs suitable to allow optimum cable traction and long life.
- Protection degree IP 65 ( cable versions only ).
- Equipped with cable fastening socks ( cable versions only ).
- Delivered with 2,5 m. incoming cable
- Working temperature:  $-5^\circ\text{C}/+50^\circ\text{C}$ .
- Max recoiling speed: 30 m/min.
- Collector insulating power: 2,5 kV.
- Compliant to 2014/35/UE - 2006/42/CE
- Manufacturer compliance to EN60335-1 - EN61242 - EN61316

### CABLE REEL SHEET

Number of conductors	4
Section (mm <sup>2</sup> )	10
Cable length (m)	38+2
Cable type	H05 VV-F
Cable diameter (mm)	22
Cable weight (g/m)	770
Maximum power cable inside reel (kW)	25,0 (400V @ 20°C)
Maximum power cable outside reel (kW)	30,0 (400V @ 20°C)
Slipping capacity (A)	60
Cable-reel weight (kg)	92

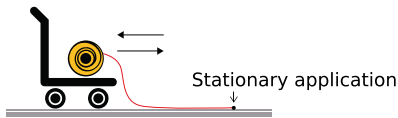
### REEL INSTALLATION METHODS

1



Manual use

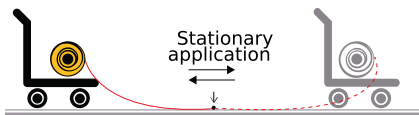
2



Stationary application

Cable reel on mobile application, 2 dir. uncoiling

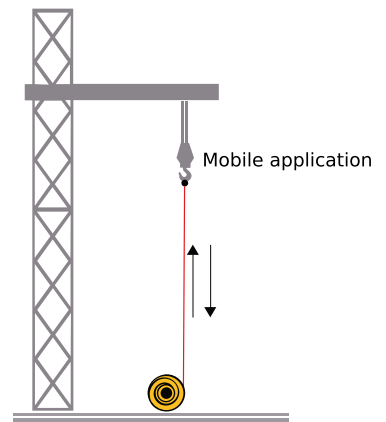
3



Stationary application

Cable reel on mobile application, 2 dir. uncoiling

4



Mobile application

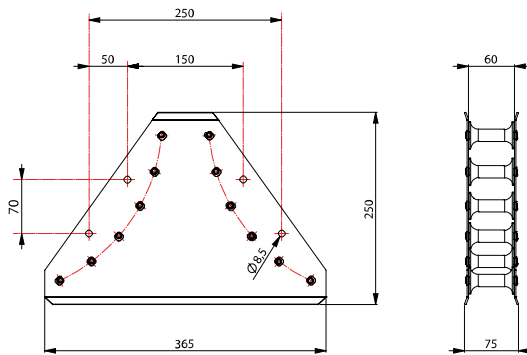
Vertical uncoiling

### ART.945 - FUNNEL-SHAPED CABLE GUIDE OUTLET

Cable guide outlet with structure made of steel sheet, with two series of rollers made of shock-resistant plastic material allowing to unwind the cable in two directions without causing excessive bending angles, and improving the performance of the cable

ART. 945 - Funnel-shaped cable guide outlet.

#### DIMENSIONS



### ART.951-954-955-957 - ROLLER CABLE GUIDE OUTLET

Cable guide outlet with structure made of galvanized steel sheet and nylon rollers. By repositioning the rollers it allows to get different dimensions of cable outlet.

ART	A	B	C
951		125	55
954	15-25-35-45-55	185	115
955		215	145

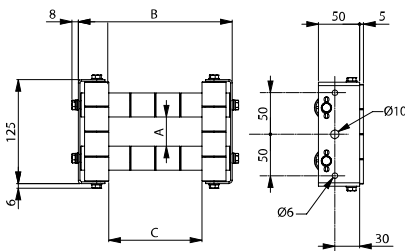


ART. 951-954-955

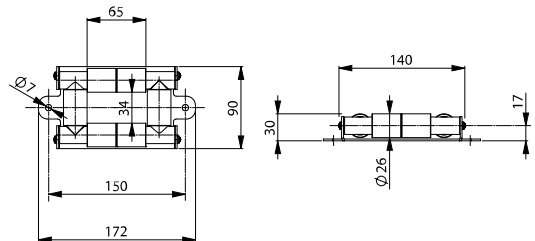


ART. 957

#### DIMENSIONS

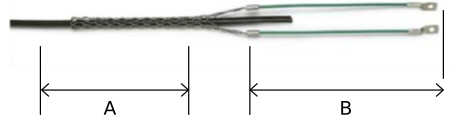
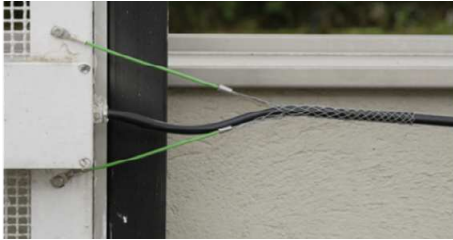


#### DIMENSIONS



### CABLE-FASTENING SOCKS

The cable fastening socks are manufactured in galvanized steel and are useful for fastening the the cable at its end without damaging the internal conductors, this avoiding curling and fast wearing of the cable.



ART	CABLE EXT. Ø	A	B
949/10	8-10	165	130
949/12	10-13	165	130
949/14	15-18	140	200
949/15	12-16	130	165
949/17	18-22	200	140
949/20	22-28	200	195

Supplied as standard on full-cable 1700 series.

### ART. 956 - FRICTION SPRING

If discontinuous and high tractive efforts are expected, we suggest inserting a friction spring between the cable-fastening sock and the anchorage point.

ART. 956 - Friction spring.

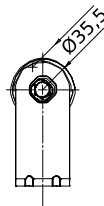
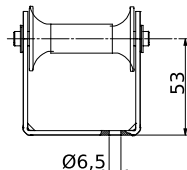
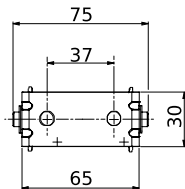


### ART. 932 - CABLE GUIDE ROLLER WITH BRACKET

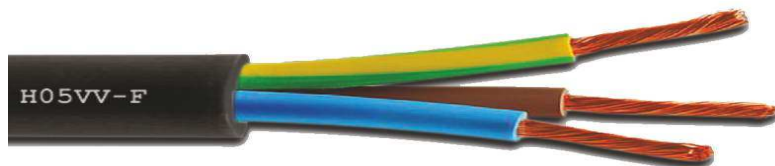
Cable guide roller made of shock-resistant plastic material with bracket of galvanized steel sheet.

ART. 932 - Cable guide roller with bracket.

#### DIMENSIONS






### H05 VV-F



Multi-core cable for flexing applications

Minimum bending radius: 10 x Outer Ø

 Conductors	Section (mm <sup>2</sup> )	Outer Ø (mm)	Weight (g/m)	 Core insulation	 Outer jacket	Colour
4	10	22	770	PVC	PVC	BLACK

Voltage rating (V): 500

Test Voltage (V): 2.000

Temperature Rating (°C): +70

Construction: compliant to EN 50525-1 / IMQ-CPT 007

Flame retardant: according to the standard IEC 60332-1-2

Fire propagation: according to CEI 20-22 II

Gas emission: according to CEI EN 50267-2-1