



CABLE REEL FOR SIGNALS TRANSMISSION



These cable reels have the same external body and the same mechanical features of the traditional models shown in the general catalogue, but inside they have a slipring and a cable particularly suitable for the transmission of signals. Ideal for video and digital signals.

STANDARD APPLICATIONS

- Video systems
- Robots and downhole inspection equipment
- Manufacturing and process control equipment
- Medical equipment
- Packaging machines

This particular slip ring can be used in any system requiring the transmission of electrical and/or power signals to an intermittently or continuously rotating shaft.

This Series is especially suitable for transmission of critical signals, such as hi frequency signals (video, fieldbuses, etc.), very low currents and voltages (strain gages, thermocouples, measuring equipment etc.).

Thanks to the small ring diameter, the sliprings grant low peripheral speed between brushes and rings, as well as reduced dynamic imbalance what means very low wear. Moreover, the use of noble metals (gold to gold alloy) assures longlasting using life, reduced electric noise and interferences among circuits, low contact electric resistance.

SLIPRING TECHNICAL FEATURES

- 12 contacts, max capacity 2A, max48V.
- Gold alloy rings and brushes.
- High reliability and duration.
- Low friction torque.
- Dielectric strength: 500 Vac a 60 Hz
- Insulation resistance: > 1000 MΩ/ 500 Vcc
- Noise: < 100 mΩ a 6 Vcc and 50 mA (at 5 rpm)

CABLE TECHNICAL FEATURES

- Outer jacket: low-adhesion mixture on the basis of TPE, especially abrasion-resistant and highly flexible.
- Following 2006/95/EG
- Following EU guideline (RoHS) 2002/95/EC
- Cores combined in bundles and stranded together around a centre for high tensile stresses with adapted, short pitch lengths and pitch directions, especially low-torsion structure.

| Number of conductors and rated section (mm ²) | Ext. diam. (mm) | Copper weight (Kg/Km) | Weight (Kg/Km) |
|---|-----------------|-----------------------|----------------|
| 12 x 0,5 | 9,5 | 58 | 105 |



CABLE REEL 6712/PRC/IP65 FOR SIGNALS TRANSMISSION

ALUMINIUM CASE



PROTECTION DEGREE IP65

Manufactured according to standard:
 Construit selon norme:
 EN 61242 EN 60335-1

CE

These products comply with Directives:
 Produits conformes aux Directives:
 2006/95/CE 2006/42/CE 2002/95/CE



REEL FEATURES

- Die-cast aluminium case.
- Cable roller guide.
- Ratchet stop device every 50 cm.
- All cable reels are supplied with predisposition for cable-stop device off.** It can be easily inserted
- Protection degree IP65.
- Working temperature -5°C/+40°C.
- Delivered with 2 m. cable at feeding side.



CARACTERISTIQUES DE L'ENROULEUR

- Boîtier en aluminium moulé.
- Dispositif guide-câble à rouleaux.
- Cliquet d'arrêt applicable tous les 50 cm.
- Tous les enrouleurs de câble sont livrés avec la predisposition du dispositif de blocage-câble non inséré.** Facile à insérer.
- Degré de protection IP65.
- Température d'utilisation -5°C/+40°C.
- Livrés avec 2m. de câble coté alimentation.



EIGENSCHAFTEN AUFROLLER

- Außengehäuse aus Aluminium.
- Kabelführungsöffnung mit Rollen.
- Kabelrücklaufperre mit Zahnarretierung alle 50 cm.
- Alle Kabelaufroller werden mit abgeschalteter Voreinstellung der Kabelsperrevorrichtung geliefert.** Leicht auszuschalten.
- Schutzart IP65.
- Umgebungstemperatur für Verwendung -5°C/+40°C.
- Geliefert mit 2m. Leitung am Zuführungseite.

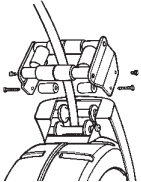


CARACTERISTICAS DE L'ENROLLADOR

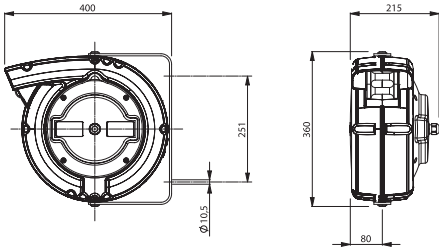
- Caja en aluminio colado bajo presión.
- Boca guía del cable a rodillo.
- Dispositivo de parada del cable a cremallera, ajustable cada 50 cms.
- Todos los arrollables se proveen con la predisposición del dispositivo arresto cable desconectada.** Fácilmente insertable.
- Grado de protección IP65.
- Temperatura ambiente de utilización -5°C/+40°C.
- Provisto con 2 m. cable en lado alimentación.

OPTIONAL

- ART. 953** - Roller cable-guide.
 - Bouche guide-cable à rouleaux.
 - Rollen-Kabelführungsöffnung.
 - Boca guidacable con rodillos.
- ART. 6100** - PRC to PRL conversion kit.
 - Kit de transformation de PRC en PRL.
 - Umbau-Satz von PRC in PRL.
 - Kit conversion de PRC en PRL.
- ART. 949/PR** - Device to fasten the pivoting bracket of the cable reel.
 - Dispositif pour rendre fixe le support de fixation des enrouleurs.
 - Feststellvorrichtung um die Befestigungsbügel der Kabelaufroller zu fixieren.
 - Dispositivo para mantener fija, la abrazadera de fijación del enrollador.



DIMENSIONS



| Number of conductor Nombre des conducteurs Anzahl der Leiter Número de conductores | Conductors section, sqmm Section des conducteurs en mmq Querschnitt der Leiter, qmm. Sección des conductores | Metres of cable Mètres de câble Kabellänge m Metros de cable | Art. | Cable diameter, mm. Diamètre du câble mm Durchmesser des Kabels Diámetro cable mm. | V max | A max | cable type |
|---|---|---|----------------------|---|-------|-------|------------|
| 12 | 0,50 | 20 + 2 | 6712/PRC/IP65 | 9,5 | 48 | 2 | TPE |



CABLE REEL 4712 FOR SIGNALS TRANSMISSION

Manufactured according to standard:
Construit selon norme:
EN 61242 EN 60335-1



These products comply with Directives:
Produits conformes aux Directives:
2006/95/CE 2006/42/CE 2002/95/CE



OPTIONAL

ART. 949/804-4000 - Device to fasten the pivoting bracket of the cable reel.

- Dispositif pour rendre fixe le support de fixation des enrouleurs.
- Feststellvorrichtung um die Befestigungsbügel der Kabelaufroller zu fixieren.
- Dispositivo para mantener fija, la abrazadera de fijación del enrollador.



REEL FEATURES

- Shock resistant plastic external case
- Cable roller guide
- Ratchet stop device every 50 cm., easily removed if constant traction of cable is required
- Protection degree IP42
- Working temperature -5°C/+40°C
- Delivered without cable at feeding side



CARACTERISTIQUES DE L'ENROULEUR

- Boîtier en plastique antichoc
- Dispositif guide-câble à rouleaux
- Cliquet d'arrêt applicable tous les 50 cm., facile à dégager lorsqu'on désire le câble toujours en traction.
- Degré de protection IP42
- Température d'utilisation -5°C/+40°C
- Livrés sans câble coté alimentation



EIGENSCHAFTEN AUFROLLER

- Außengehäuse aus schlagfestem Kunststoff
- Kabelführungsöffnung mit Rollen
- Kabelrücklaufperre mit Zahnarretierung alle 50 cm, leicht auszuschalten, falls das Kabel kontinuierlich in Anspannung sein soll
- Schutzart IP42
- Umgebungstemperatur für Verwendung -5°C/+40°C
- Geliefert ohne Kabel an der Zuführungsseite



CARACTERISTICAS DE L'ENROLLADOR

- Elementos estructurales de material plástico antigolpes
- Boca guía del cable a rodillo
- Dispositivo de parada del cable a cremallera, ajustable cada 50 cms. y de fácil eliminación en caso que se quiera el tubo en constante tracción
- Grado de protección IP42
- Temperatura ambiente de utilización -5°C/+40°C
- Provisto sin cable en lado alimentacion

| Number of conductor Nombre des conducteurs Anzahl der Leiter Número de conductores | Conductors section, sqmm Section des conducteurs en mmq Querschnitt der Leiter, qmm. Sección des conductores | Metres of cable Mètres de câble Kabellänge m Metros de cable | Art. | Cable diameter, mm. Diamètre du câble mm Durchmesser des Kabels Diametro cable mm. | V max | A max | cable type |
|---|---|---|------|---|-------|-------|------------|
| 12 | 0,50 | 9 + 1 | 4712 | 9,5 | 48 | 2 | TPE |